

SOFTWARE

KR C...

Technology Packages

**Installation/Uninstallation/Update of Tech Packages
SystemTech (KRS) from V5.x**

© Copyright **KUKA Roboter GmbH**

This documentation or excerpts therefrom may not be reproduced or disclosed to third parties without the express permission of the publishers. Other functions not described in this documentation may be operable in the controller. The user has no claim to these functions, however, in the case of a replacement or service work.

We have checked the content of this documentation for conformity with the hardware and software described. Nevertheless, discrepancies cannot be precluded, for which reason we are not able to guarantee total conformity. The information in this documentation is checked on a regular basis, however, and necessary corrections will be incorporated in subsequent editions.

Subject to technical alterations without an effect on the function.

PD Interleaf

Contents

1	Installation, uninstallation and update of Tech packages	5
1.1	Prerequisites	5
1.2	Module overview	5
1.3	Installation / setup of a technology software package	6
1.3.1	Installation – start phase	6
1.3.2	Installation – preparation phase	7
1.3.3	Installation – final phase	8
1.4	Uninstalling a technology software package	9
1.4.1	Uninstallation – start phase	9
1.4.2	Uninstallation – preparation phase	9
1.4.3	Uninstallation – final phase	10
1.5	Reinstalling a technology software package	11
1.5.1	Reinstallation – start phase	11
1.5.2	Reinstallation – preparation phase	11
1.5.3	Reinstallation – final phase	12
1.6	Software update of a technology package	13
1.6.1	Software update – start phase	13
1.6.2	Software update – preparation phase	14
1.6.3	Software update – final phase	14
1.7	Log files	15
1.8	Updating a KR Cx software release	15



1 Installation, uninstallation and update of Tech packages

This document deals with the general installation, uninstallation, reinstallation and update procedures for KUKA technology software packages for the KRC software from version 5.x onwards.

These procedures are structured in the same way for all technology packages, but with slight differences from one Tech package to another. Details can be found in the documentation of the specific technology package concerned.

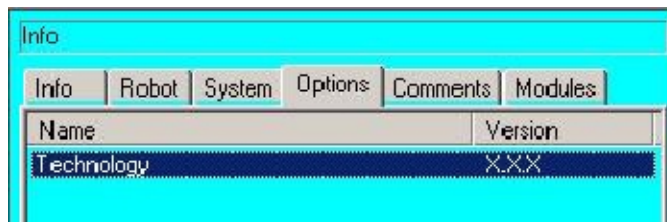
1.1 Prerequisites

Tech packages allow the user to expand the KRC system in a modular way to include specific applications and technologies. The following prerequisites generally apply:

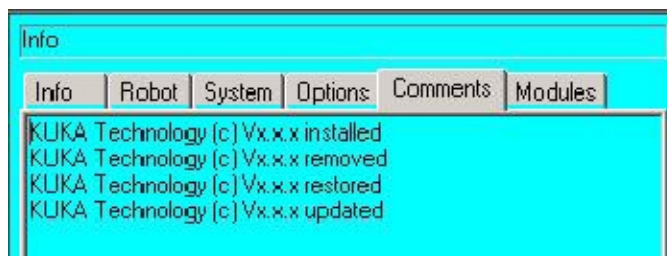
- KRC robot controller
- KRC software V5.x or higher
- Technology CD
- Technology-specific prerequisites. These prerequisites (field bus cards, external controllers, etc.) can be found in the documentation of the specific technology package concerned.

1.2 Module overview

The KRC user interface offers an overview of the technology packages already installed (and their software versions) in the form of a corresponding information window accessible via the menu "Help->Info". All the technology modules installed on the robot controller are displayed in the "Options" tab:



In addition to this, all procedures that have already been executed are stored chronologically in the "Comments" tab.



1.3 Installation / setup of a technology software package

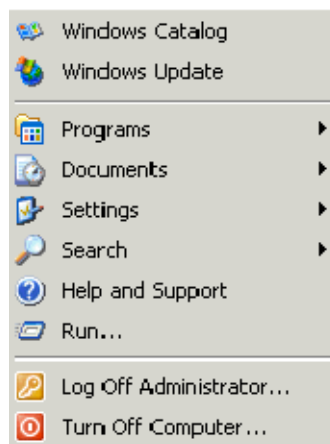
Installation is carried out with the Windows operating system running. It is not necessary for any KRC software to be running. Should you wish to install the software with the KRC controller running, however, you must first log on in the user group “Expert”.

The installation is subdivided into three phases:

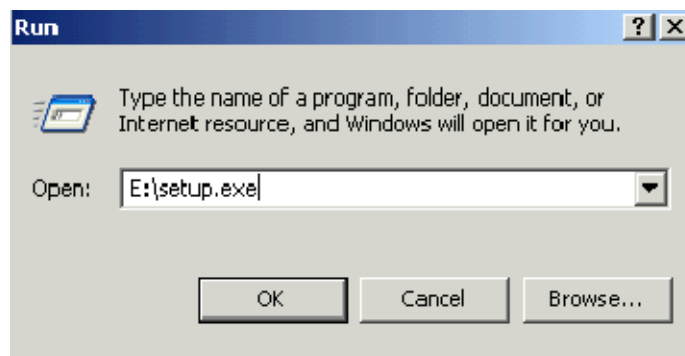
- Start phase (start of the procedure)
- Preparation phase (copying and saving of files)
- Final phase (modification, completion)

1.3.1 Installation – start phase

- Place the setup CD in the CD-ROM drive (E:).
- Open the Windows Start menu by pressing the CTRL and ESC keys simultaneously.

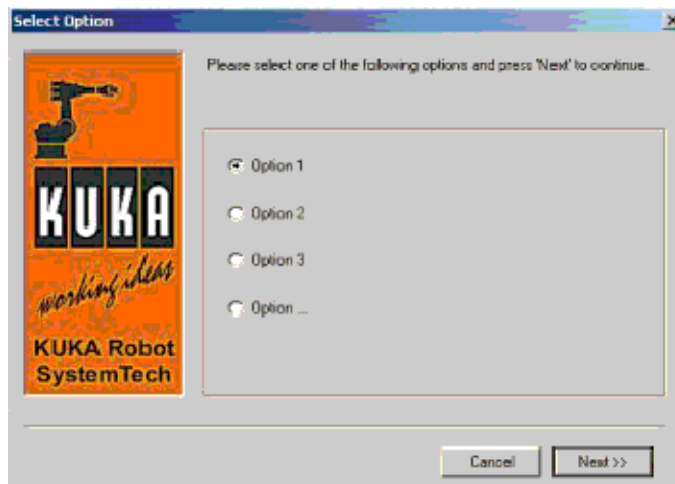


- Select “Run”.
- Now enter: **E:\setup.exe.**



- Optional: depending on the technology, structure and CD configuration, other selection windows may also appear:

1 Installation, uninstallation and update of Tech packages (continued)



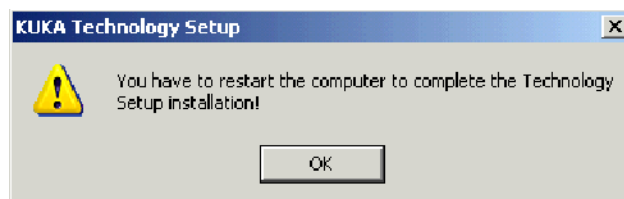
- Select the desired option and click on “Next >>” (note: the option can be a technology, controller type or some other characteristic).
- In some cases there may be a number of successive option windows. Select the desired option in each case and confirm your selection by pressing “Next>>”.

1.3.2 Installation – preparation phase

In the preparation phase, the required files are copied to the hard disk.



If the KRC controller is running, you will be asked to restart the system once the preparation phase is completed.



It is important that this restart is carried out – manually – immediately after this message.



If the software is being installed on a control computer without the KRC software running, no reset is required between the preparation and final phases.

1.3.3 Installation – final phase

Once the controller has been restarted, the final phase starts automatically as soon as the operating system has run up, thus resuming and completing the installation procedure. A corresponding message is generated:



1.4 Uninstalling a technology software package

Uninstallation is carried out with the Windows operating system running. It is not necessary for any KRC software to be running. Should you wish to uninstall the software with the KRC controller running, however, you must first log on in the user group "Expert".



Once technology packages have been uninstalled, KRL programs containing commands pertaining to these technology packages may malfunction.

The uninstallation is subdivided into three phases:

- Start phase (start of the procedure)
- Preparation phase (copying and saving of files)
- Final phase (modification, completion)

1.4.1 Uninstallation – start phase

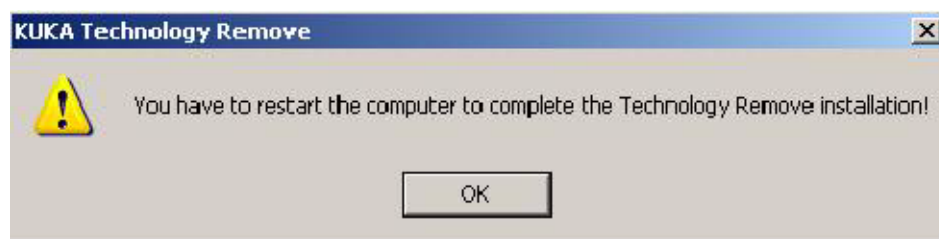
The technology package is uninstalled by means of the program **Uninst.exe**, which is located in the directory `C:\KRC\KRC_OPTION\(name of technology package)\UNINST`. No CD is required for uninstallation.

1.4.2 Uninstallation – preparation phase

Once this program has been started, affected files are modified in the preparation phase. The following window appears:



If the KRC software is running, you will be asked to restart the system once the preparation phase is completed.



Confirm with "OK" and restart the robot controller.



A manual restart must be carried out after this message.



If the software is being uninstalled from a control computer without the KRC software running, no reset is required between the preparation and final phases.

1.4.3 Uninstallation – final phase

Once the controller has been restarted and the operating system has run up, the final phase starts automatically. The uninstallation process is resumed and completed. The following message is then generated:



1.5 Reinstalling a technology software package

Reinstallation is carried out with the Windows operating system running. It is not necessary for any KRC software to be running. Should you wish to reinstall the software with the KRC controller running, however, you must first log on in the user group "Expert".

The reinstallation is subdivided into three phases:

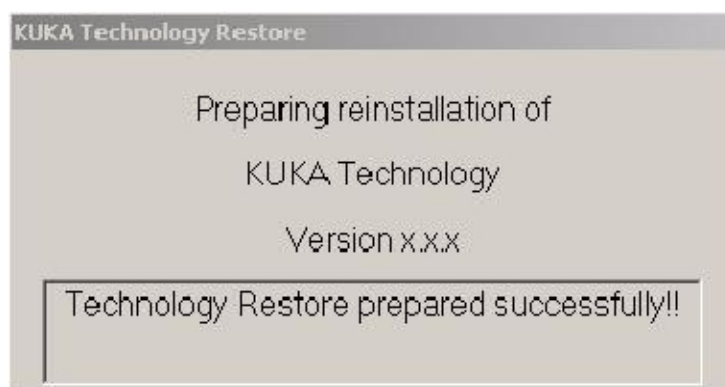
- Start phase (start of the procedure)
- Preparation phase (copying and saving of files)
- Final phase (modification, completion)

1.5.1 Reinstallation – start phase

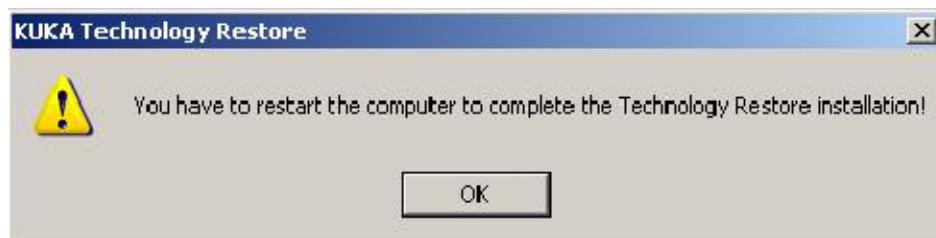
Reinstallation, i.e. installation after the successful uninstallation of a technology package, is carried out by means of the program **ReInst.exe**, which is located in the directory `c:\KRC_OPTION\(name of technology package)\REINST`. No CD is required for reinstallation.

1.5.2 Reinstallation – preparation phase

Once this program has been started, affected files are modified in the preparation phase. The following window appears:



If the KRC software is running, you will be asked to restart the system once the preparation phase is completed.



A manual restart must be carried out after this message.



If the software is being reinstalled from a control computer without the KRC software running, no reset is required between the preparation and final phases.

1.5.3 Reinstallation – final phase

Once the controller has been restarted and the operating system has run up, the final phase starts automatically. The reinstallation process is resumed and completed. The following message is then generated:



1.6 Software update of a technology package

Like the setup procedure, the update procedure is started by means of the file “**Setup.exe**” on the CD. The system then checks whether or not the technology package in question has already been installed. **If the technology package is installed, an update is carried out.** Otherwise, a complete software setup is carried out.

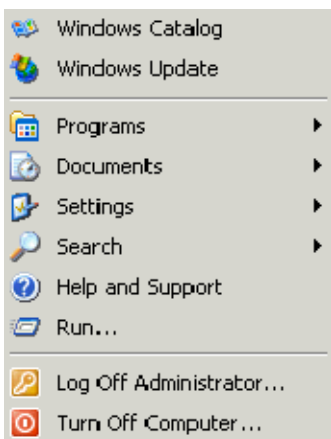
A software update is carried out with the Windows operating system running. It is not necessary for any KRC software to be running. Should you wish to install the software with the KRC controller running, however, you must first log on in the user group “Expert”.

A software update is also subdivided into three phases:

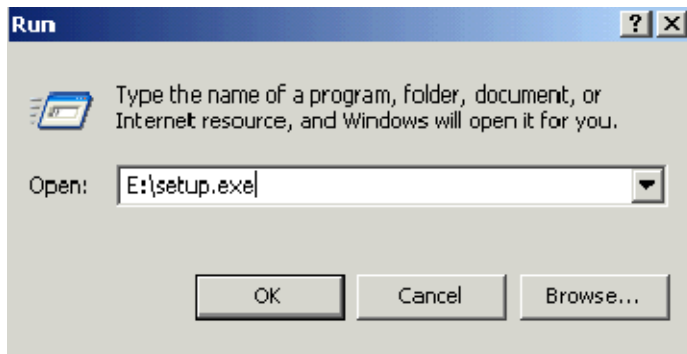
- Start phase (start of the procedure)
- Preparation phase (copying and saving of files)
- Final phase (modification, completion)

1.6.1 Software update – start phase

- Place the setup CD in the CD-ROM drive (E:).
- Open the Windows Start menu by pressing the CTRL and ESC keys simultaneously.

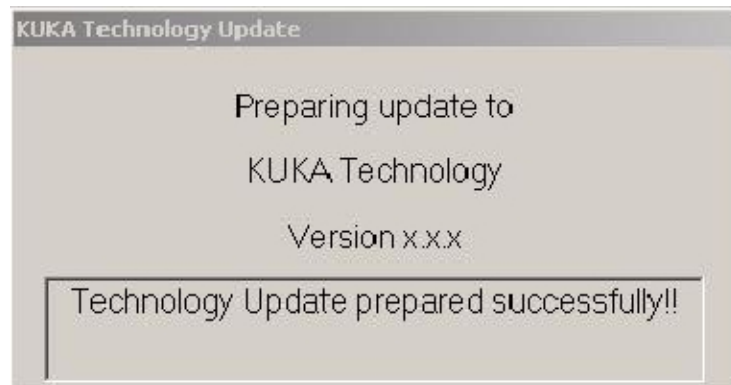


- Select “Run”.
- Now enter: **E:\setup.exe.**

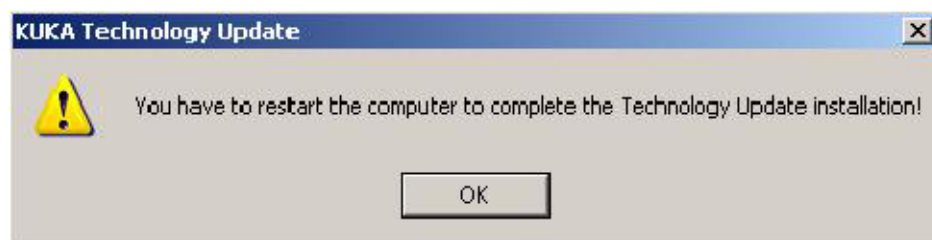


1.6.2 Software update – preparation phase

In the preparation phase, the required files are copied to the hard disk.



If the KRC software is running, you will be asked to restart the system once the preparation phase is completed.



It is important that this restart is carried out – manually – immediately after this message.



In the case of a software update on a control computer without the KRC software running, no reset is required between the preparation and final phases.

1.6.3 Software update – final phase

Once the controller has been restarted and the operating system has run up, the final phase starts automatically. The software update is resumed and completed. The following message is then generated:



1.7 Log files

Log files are generated during installation, uninstallation, reinstallation and update procedures. These files are located in **C:\KRC\Roboter\Log** and contain information that is useful in the case of a fault.

- V[x.x.x_Technologie]_Setup.log
- V[x.x.x_Technologie]_Deinst.log
- V[x.x.x_Technologie]_Reinst.log
- V[x.x.x_Technologie]_Update.log

1.8 Updating a KR Cx software release



When updating the “KR Cx” software to a newer release, the installed technology packages are automatically uninstalled and then reinstalled once the update has been completed.



F

Fault, 15

I

Installation, 6

K

KR Cx software release, 15

L

Log files, 15

M

Module overview, 5

R

Reinstallation, 11

S

Setup, 6

Software update, 13

T

Tab, 5

Technology CD, 5

Technology modules, 5

U

Uninstallation, 9